

Power up Your Small Network with Gigabit Speeds

The NETGEAR® family of ProSAFE® Gigabit Smart Managed Switches is purposely designed for SMB customers with high performance, SMB-oriented features and easy management. With 8 10/100/1000 Mbps ports, each capable of powering 2000 Mbps of data throughput in full-duplex mode per port, the GS108T is an ideal solution for extending network connections into conference room, labs, lobbies and department workgroups. It enables SMB networks to support Voice over IP (VoIP), streaming media, multicasting, security, and many other bandwidth-intensive applications like ERP and large file transfers.

The GS108T comes with a comprehensive set of L2 features, such as access control lists (ACL), 802.1x port authentication (MD5), enhanced QoS, rate limiting and IGMP snooping among others to provide a small or medium-sized business with a network that is geared for growth while ensuring performance and reliability.

In addition, the GS108T supports IEEE 802.3af standard for Power over Ethernet (PoE). It can obtain its power from either a PoE source or from an external AC power adapter. This gives an SMB flexibility when installing the switch in places where a power outlet is not present.

The GS108T comes with both an intuitive Web-browser GUI interface and Smart Control Center (Windows PC required), which offer simple Smart Managed Switch management, making it a snap to monitor switch performance, configure ports, even set up port trunks, VLANs, and traffic prioritization. Alternatively, you can use SNMP-based software to manage your Smart Managed Switch. NETGEAR ProSafe Smart Managed Switches are ideal for adding basic management to your unmanaged networks or extending your managed networks.

Highlights

Intelligent

- The GS108T provides cost-efficient solutions that enable SMB customers to better manage their network. Included are performance monitoring, port configuration, VLAN for traffic control, link aggregation for increased bandwidth, IGMP snooping for facilitating multicast applications, and Class of Service (CoS) for traffic prioritization.

Ideal Advanced Security

- These Gigabit Smart Managed Switches have advanced features that provide more robust security to SMBs. These include:
 - 802.1x for authentication (MD5)
 - ACL filtering to permit or deny traffic based on MAC or IP addresses

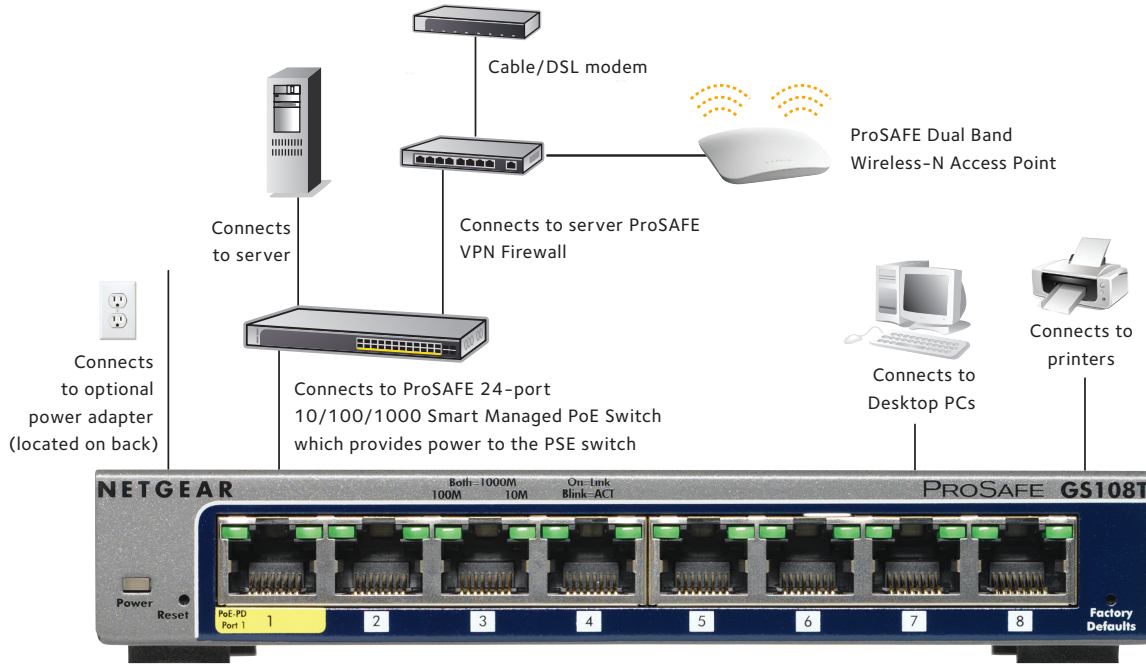
Advanced Quality of Service

- Priority queuing ensures that high-priority traffic gets delivered efficiently, even during congestion from high-traffic bursts. Companies implementing network telephony or video conferencing, for example, need to be able to prioritize such voice and video traffic and other real-time applications over less latency-sensitive traffic to ensure reliability and quality. The ability to prioritize traffic ensures quality of latency-sensitive services and applications despite increasing traffic loads. The ProSafe Gigabit Smart Managed Switch provides an extensive set of QoS features:
 - 802.1p-based prioritization
 - Layer 3-based prioritization
 - Rate limiting

NETGEAR Green

- Up to 60% lower power consumption
- Auto power-down mode conserves energy when a port is not connected
- Less transmit power when the cable is under 10 m
- Packaging manufactured with at least 80% recycled material





Technical Specifications

Network Protocol and Standards Compatibility

- IEEE 802.3i 10BASE-T
- IEEE 802.3u 100BASE-TX
- IEEE 802.3ab 1000BASE-T
- IEEE 802.3x full-duplex flow control

Power Supply

- Power consumption: 6W maximum

Network Ports

- 8 10/100/1000Mbps auto sensing Gigabit Ethernet

Physical Specifications

Dimensions: (W x D x H)

- 158 x 105 x 27mm
- (6.2 x 4.1 x 1.1in)

Weight

- 0.56kg (1.23 lb)

Performance Specifications

- Forwarding modes: Store-and-forward
- Bandwidth: 16Gbps full duplex
- Network latency: Less than 15µs for 64-byte frames in store-and-forward mode for 1000 Mbps to 1000 Mbps transmission
- Buffer memory: 512KB embedded memory per unit
- Address database size: 4k media access control (MAC) addresses
- per system
- Mean time between failures (MTBF): 275,533 hours (~32 years)
- Acoustic noise: 0dB

Electromagnetic Emissions

- CE mark, commercial
- FCC Part 15 Class B
- VCCI Class B
- C-Tick

Environmental Specifications

- Operating temperature: 0° to 104°F (0° to 40°C)
- Storage temperature: -4° to 158°F (-20° to 70°C)
- Operating humidity: 90% maximum relative humidity, non-condensing
- Storage humidity: 95% maximum relative humidity, non-condensing
- Operating altitude: 10,000ft (3,000m) maximum
- Storage altitude: 10,000ft (3,000m) maximum

Status LEDs

- Per port: Link/activity, speed
- Per device: Power

Power Adapter

- 12V, 1.0A power adapter, localized to country of sale
- Alternatively, unit can be powered by IEEE 802.3af PSE via Ethernet port¹

Technical Specifications

Electromagnetic Immunity

- EN 55024

Safety

- CE mark, commercial
- cUL IEC 950/EN 60950
- CB

Administrative Switch Management

- IEEE 802.1Q Static VLAN (64 groups, Static)
- Protected ports
- IEEE 802.1p Class of Service (CoS)
- Port-based QoS
- DSCP-based QoS
- DiffServ
- IEEE 802.3ad Link Aggregation (manual or LACP)
- IEEE 802.1w Rapid Spanning Tree Protocol (RSTP)
- IEEE 802.1s Multiple Spanning Trees Protocol (MSTP)
- IEEE 802.1ab Link Layer Discovery Protocol (LLDP)
- LLDP-MED
- SNMP v1, v2c, v3
- RFC 1213 MIB II
- RFC 1643 Ethernet Interface MIB
- RFC 1493 Bridge MIB

- RMON group 1, 2, 3, 9
- Auto voice VLAN
- DHCP Filtering
- Auto denial-of-service (DoS) protection
- HTTP and HTTPS
- Ping and traceroute
- Green features: Power saving by cable length (<10 m)
- Power saving when link down
- RFC 2131 DHCP client
- DHCP filtering
- IEEE 802.1x with Guest VLAN
- Jumbo frame support
- Port-based security by locked MAC addresses
- MAC and IP-based ACL
- Storm control for broadcast, multicast and unknown unicast packets
- IGMP snooping v1/v2
- Port-based egress rate limiting
- SNMP
- Port mirroring support (Many to one)
- Web-based configuration
- Configuration backup/restore
- Password access control
- TACACS+ and RADIUS support
- Syslog
- Firmware upgradeable

Warranty*

- NETGEAR Lifetime Warranty
- Lifetime 24x7 Online Chat Technical Support
- 90 days (24/7) Live Phone Technical Support
- Lifetime Next Business Day (NBD) Hardware Replacement

ProSUPPORT OnCall 24x7, Category 1** Service Packages

- PMB0311 (1 yr.)
- PMB0331 (3 yrs.)
- PMB0351 (5 yrs.)

Package Contents

- ProSAFE® 8-port Gigabit Smart Managed Switch (GS108Tv2)
- AC adapter
- Rubber footpads
- Wall-mount kit
- Resource CD
- Installation guide

Ordering Information

Australia & Asia

GS108T-200AUS

Europe General

GS108T-200GES

North America

GS108T-200NAS

UK

GS108T-200UKS

Japan

GS108T-200JPS

¹ IEEE 802.3af PoE capable devices.

* This product comes with a limited warranty that is valid only if purchased from a NETGEAR authorized reseller, and modifications to product may void the warranty; covers hardware, fans, and internal power supplies—not software or external power supplies; see <http://www.netgear.com/about/warranty/> for details. Lifetime technical support includes basic phone support for 90 days from purchase date and lifetime online chat support when purchased from a NETGEAR authorized reseller. This product was tested for quality and its components may be recycled. For indoor use only.

** The NETGEAR OnCall 24x7 contract provides unlimited phone and email technical support for your networking product. For ProSAFE products purchased prior to 06/2014, also includes next-business-day hardware replacement.